

SMCR7L Antibody (N-term)
Affinity Purified Rabbit Polyclonal Antibody (Pab)
Catalog # AP5571a**Specification**

SMCR7L Antibody (N-term) - Product Information

Application	WB,E
Primary Accession	O9NOG6
Other Accession	NP_061881.2
Reactivity	Human, Mouse
Host	Rabbit
Clonality	Polyclonal
Isotype	Rabbit IgG
Calculated MW	51293
Antigen Region	105-132

SMCR7L Antibody (N-term) - Additional Information**Gene ID** 54471**Other Names**

Mitochondrial dynamics protein MID51, Mitochondrial dynamics protein of 51 kDa, Mitochondrial elongation factor 1, Smith-Magenis syndrome chromosomal region candidate gene 7 protein-like, SMCR7-like protein, MIEF1, MID51, SMCR7L

Target/Specificity

This SMCR7L antibody is generated from rabbits immunized with a KLH conjugated synthetic peptide between 105-132 amino acids from the N-terminal region of human SMCR7L.

Dilution

WB~~1:1000

E~~Use at an assay dependent concentration.

Format

Purified polyclonal antibody supplied in PBS with 0.09% (W/V) sodium azide. This antibody is purified through a protein A column, followed by peptide affinity purification.

Storage

Maintain refrigerated at 2-8°C for up to 2 weeks. For long term storage store at -20°C in small aliquots to prevent freeze-thaw cycles.

Precautions

SMCR7L Antibody (N-term) is for research use only and not for use in diagnostic or therapeutic procedures.

SMCR7L Antibody (N-term) - Protein Information**Name** MIEF1 ([HGNC:25979](#))

Function Mitochondrial outer membrane protein which regulates mitochondrial fission/fusion dynamics (PubMed:[21701560](#), PubMed:[23921378](#), PubMed:[33632269](#)). Promotes the recruitment and association of the fission mediator dynamin-related protein 1 (DNM1L) to the mitochondrial surface independently of the mitochondrial fission FIS1 and MFF proteins. Regulates DNM1L GTPase activity and DNM1L oligomerization. Binds ADP and can also bind GDP, although with lower affinity. Does not bind CDP, UDP, ATP, AMP or GTP. Inhibits DNM1L GTPase activity in the absence of bound ADP. Requires ADP to stimulate DNM1L GTPase activity and the assembly of DNM1L into long, oligomeric tubules with a spiral pattern, as opposed to the ring-like DNM1L oligomers observed in the absence of bound ADP. Does not require ADP for its function in recruiting DNM1L.

Cellular Location

Mitochondrion outer membrane; Single-pass membrane protein

Tissue Location

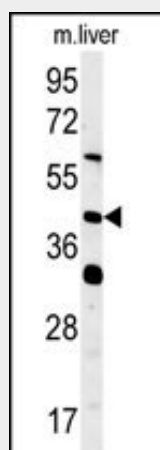
Expression is relatively high in heart, skeletal muscle, pancreas and kidney.

SMCR7L Antibody (N-term) - Protocols

Provided below are standard protocols that you may find useful for product applications.

- [Western Blot](#)
- [Blocking Peptides](#)
- [Dot Blot](#)
- [Immunohistochemistry](#)
- [Immunofluorescence](#)
- [Immunoprecipitation](#)
- [Flow Cytometry](#)
- [Cell Culture](#)

SMCR7L Antibody (N-term) - Images



SMCR7L Antibody (N-term) (Cat. #AP5571a) western blot analysis in mouse liver tissue lysates (15ug/lane). This demonstrates the SMCR7L antibody detected SMCR7L protein (arrow).

SMCR7L Antibody (N-term) - Background

SMCR7L belongs to the SMCR7 family. The specific function of this protein remains unknown.

SMCR7L Antibody (N-term) - References

Jin, J., et al. Curr. Biol. 14(16):1436-1450(2004)
Simpson, J.C., et al. EMBO Rep. 1(3):287-292(2000)
Dunham, I., et al. Nature 402(6761):489-495(1999)